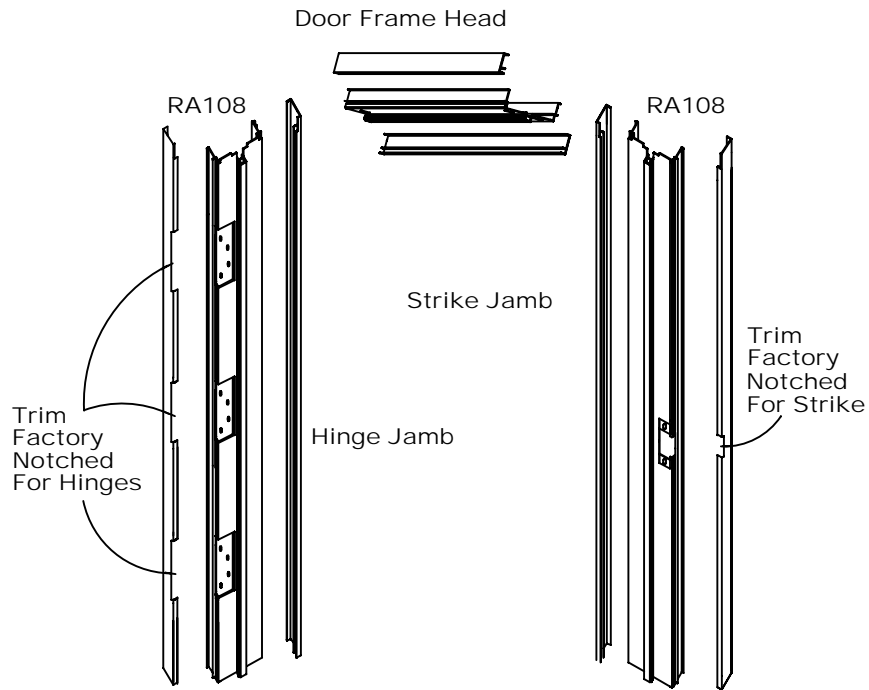


Raco Solutions II

Solutions II Door Frame



Trim Shown is 1-1/2" x 3/8" Profile

* SEE INSTALLATION INSTRUCTION DETAILS



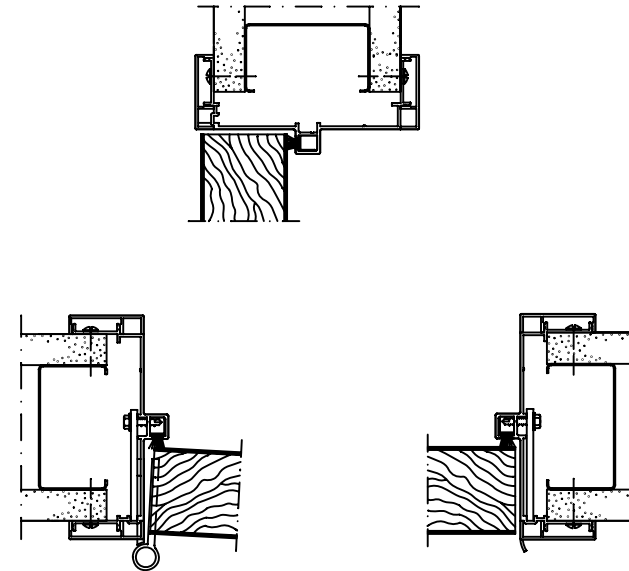
RA108



ST137

FRAMES MUST BE INSTALLED PLUMB AND SQUARE

Solutions II Door Frame



Trim Shown is 1-1/2" x 3/8" Profile

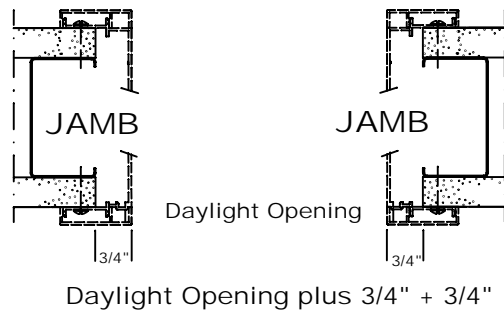
Raco Solutions II

General Rough Opening Formulas

IMPORTANT:
WALL THICKNESS CANNOT EXCEED 1/8" THICKER
THAN NOMINAL (3-3/4" OR 4-7/8").

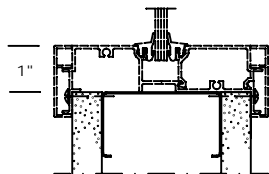
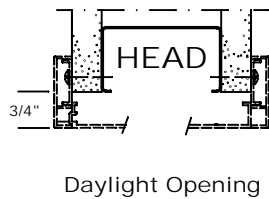
Drywall Construction

Width



Height

Door Frame
Formula:
Daylight Opening
Plus 3/4"



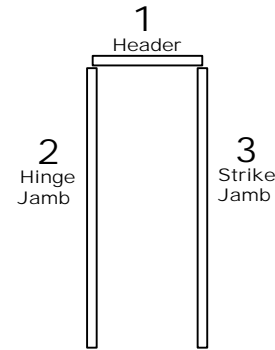
Borrowed Lite
and Clerestory
Formula:
Daylight Opening
Plus 3/4" at Head
Plus 1" at Sill

C STUD REVERSED AT HEAD AND JAMBS

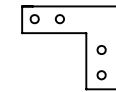
Trim Shown is 1-1/2" x 3/8" Profile

General Installation Guidelines

INSTALLATION SEQUENCE



- Slip frame head over drywall to door opening height and level.
- Measure and cut hinge jamb.
- Slip hinge jamb tabs into header slots
- Measure and cut strike jamb.
- Slip strike jamb tabs into head slots.
- Clip door frame together. Level head and plumb jamb..
- Screw to wall.
- Attach door frame trim and align notches.



RA108



FRAMES MUST BE INSTALLED PLUMB AND SQUARE

